

3 MIX

Sound insulation, reduces the transmission of airborne noise in walls between neighbours

walls



Description

3 MIX is a complex made up of a sheet of synthetic EPDM rubber of 3.5 kg/m² that has AIRMIX 10 mm thick felt adhered to one of its sides.

Application

It improves the acoustic insulation when it is placed in the chambers of double walls, whether brick or drywalls, and in reinforced chambers. Particularly indicated when a M1 fire protection is required.

Acoustic reduction

14 cm thick perforated brick wall with a double layer of 13 mm thick laminated plaster and LAMIX between panels, in the reinforcement chamber multi-layer 3 MIX material has been placed and it gives the following results in acoustic reduction:

R _w (C; C _{tr}) = 54 (-2; 4) dB	ISO 717-2
R' (A) = 53 dB(A)	NBE CA-88

Test carried out as per the UNE-EN-ISO 140-4:1999 in standardised "in situ" chambers.

■ Excellent behaviour of airborne noise insulation, acoustic absorption and thermal insulation, thanks to the combination of felt + EPDM + felt.

■ M1 fire classification.

 technical specifications available at our website in PDF format

SYSTEM

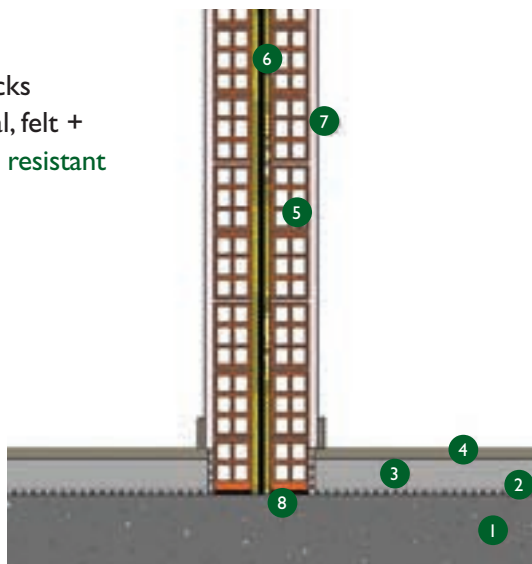
Brick walls

Floor

- 1 Framework between floors
- 2 Insulation: SOUNDMIX GM/ON, FOAMMIX
- 3 5 mm layer of mortar
- 4 Flooring

Vertical separation

- 5 7 cm thick double hollow bricks
- 6 Insulation, multi-layer material, felt + EPDM sheet + felt: 3 MIX, fire resistant
- 7 1.5 cm plaster finish
- 8 Elastic joint



Technical data

Weight: 4.700 Kg/m²

Fogging: > 90 % (DIN 75 201-A) (NF P 92-507)

Thickness: 21 mm

Colour: Black and yellow

Flammability: Self-extinguishing (S.E.) (ISO 3795; MVSS302) up to UL94 V-2 / up to M1 classification



3 MIX

walls



Easy to install



Certified product

MI fire classification



Important

The expansion joints envisaged in the building should not be short-circuited with 3 MIX, but require their own treatment, respecting the movement of the building for which they are envisaged.

MEASUREMENTS AND PACKING

3 MIX	weight	format	length	width	u/pallet	package	weight/pallet
	4.700 Kg/m ²	roll	5 m	1 m	20	stretchable plastic	490 Kg

PROPERTIES

Reduces airborne noise

3 MIX acts as acoustic insulation thanks to the viscoelastic properties of EPDM and the acoustic absorption of felt, managing to reduce transmissions of airborne noise through the walls. The behaviour of the system is based on the combination of a heavy resounding membrane and a great deal of elasticity that provides high muffling powers, adhered to a layer of sound-proofing, meaning that there is a strong change of impedances in the system and therefore a reduction in the noise transmitted by the system in the entire audible bandwidth, in low frequencies due to the resounding effect of the EPDM and in medium and high frequencies due to the effect of the absorption of the felt.

Improves room comfort

Thanks to the heat transmission coefficient ($K=0.62 \text{ Kcal/m}^2\text{h}^\circ\text{C}$) of AIRMIX, you get improved thermal comfort in the home by reducing heat loss.

Fire resistant

The components of 3 MIX have been given a fire-proofing treatment making them ideal to use in buildings that require a high level of fire protection.

EASY TO INSTALL

3 MIX is supplied in rolls that are 1 metre wide and 5 metres long. It can be cut with a cutter and special tools are not required for handling it.

In partition walls with double side

- 1 Build one of the party walls of the building.
- 2 The wall must be stable, levelled and with no protruding remains.
- 3 Join 3 MIX with the wall, starting at the bottom and working up. Attach it with plastic pins. 2 per square metre of surface area (2 at the top, 1 in the middle and 2 at the bottom).
- 4 Raise the other party wall.

Storage

Store the product in a well-ventilated area far from sources of heat. Protect the product from sunlight and atmospheric phenomena in general. Do not store out of doors. Store between 0 °C and 40 °C. Protect from dust and sand. It is not recommendable to store pallets on top of each other for long periods of time.



**ACOUSTIC
& INSULATION
TECHNIQUES**

Molí d'en Bisbe s/n Pol. Ind. Foinvasa 08110 Montcada i Reixac (Barcelona)
Tel: (+34) 935 651 980 | Fax: (+34) 935 750 220 | division.construccion@protasa.es | www.protasa.com

Customer Service
Tel: (+34) 935 651 980



ISO 9001
ISO 14000