

SOUNDMIX GM/RH

Impact and airborne noise insulation in floors for renovation work



Description

SOUNDMIX GM/RH is a complex made up of a sheet of synthetic EPDM rubber, of 2 kg/m², which has a sheet of 2 mm thick high-density reticulated polyethylene adhered to one side of it. The complex has a layer of fleece adhered to both sides.

Application

Acoustic treatment of frameworks in restoration work in which the existing floor is preserved. The fleece protection favours the mortar sticking to the existing floor and to the new one.

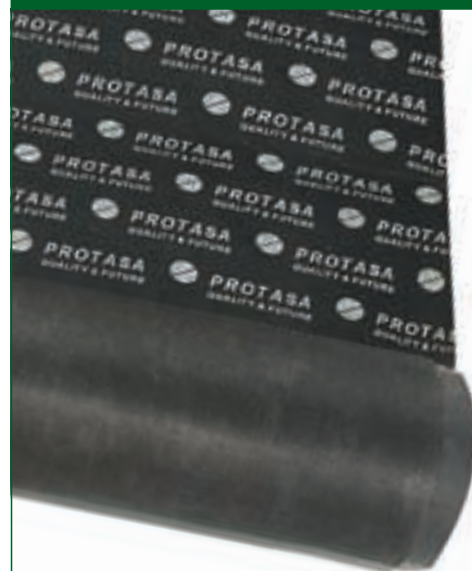
Acoustic reduction

SOUNDMIX GM/RH between a framework (25 + 5 cm) and a 3 cm thick layer of cement on top and under earthenware floor tiles gives the following results in acoustic reduction:

- Sheet specially designed to be stuck to restored floors with mortar glue.

L_{nT,w} (CI) = 63 (-2) dB ISO 717-2
L_n (A) = 69 dB(A) NBE CA-88

Test carried out "in situ".



floors

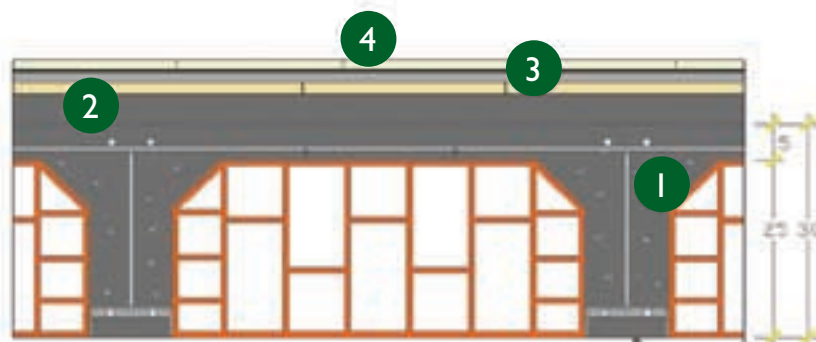


technical specifications available at our website in PDF format

SYSTEM

Frameworks in renovation work.

- 1 Framework between floors
- 2 Layer of levelling mortar of approximately 5 cm or existing flooring
- 3 Insulation, sheet of EPDM + foam + fleece on both sides: SOUNDMIX GM/RH
- 4 Flooring



Technical data

Weight: 2.120 Kg/m²

Thickness: 3 mm

Water steam transmission: 491.6 mg/m²h

Colour: Black and grey

MEASUREMENTS AND PACKING

SOUNDMIX GM/RH	weight	format	length	width	u/pallet	package	weight/pallet
	2.120 Kg/m ²	roll	8 m	1 m	20	stretchable plastic	360 Kg



ACOUSTIC & INSULATION TECHNIQUES

PROPERTIES

Reduces impact noise

SOUNDMIX GM/RH is a sheet that is specially designed to be stuck to an existing floor or a cement layer and the new finish with mortar glue. It acts as insulation against impact noise due to the properties of the reticle of polyethylene.

Improves room comfort

Due to the layer of synthetic rubber that acts as an absorber of sound vibrations, the echo noise that occurs within the room is reduced, providing greater comfort

Reduces airborne noise

The sheet of EPDM together with the sheet of reticulated polyethylene improves the airborne acoustic insulation of the framework due to the change of impedances that are produced between the two materials.

Steam barrier

SOUNDMIX GM/RH is a compact material with a very low steam transmission level, which together with CINMIX for sealing the joints, creates a steam barrier between frameworks preventing the formation of damp and mold.

EASY TO INSTALL

SOUNDMIX GM/RH is supplied in rolls that are 1 metre wide and 8 metres long and that are easy to carry. It can be cut with a cutter and special tools are not required for laying it.

- 1 The floor must be stable, levelled and without any remains of material. Before installing, cut SOUNDMIX GM/RH to the required size.
- 2 Spread the mortar-glue with a notched trowel.
- 3 Lay the SOUNDMIX GM/RH with the layer of PE against the mortar-glue.
- 4 Make sure air bubbles do not form between the floor and the SOUNDMIX GM/RH.
- 5 Apply CINMIX self-adhesive to weld the joints between the sheets of SOUNDMIX GM/RH and to stick them to the walls of the room.
- 6 Wait for 24-48 hours before walking on the layer of SOUNDMIX GM/RH.
- 7 Spread the mortar-glue with a notched trowel on the sheet of SOUNDMIX GM/RH following the mortar manufacturer's instructions for the type of ceramic finish to be used.
- 8 Lay the floor tiles.



Storage

Store the product in a well-ventilated area far from sources of heat. Protect the product from sunlight and atmospheric phenomena in general. Do not store out of doors. Store between 0 °C and 40 °C. Protect from dust and sand. It is not recommendable to store pallets on top of each other for long periods of time.

SOUNDMIX GM/RH

floors



Easy to install



Certified product



Important

The expansion joints envisaged in the building should not be short-circuited with SOUNDMIX GM/RH, but require their own treatment, respecting the movement of the building for which they are envisaged.

Before laying SOUNDMIX GM/RH, you should check that the floor is clean, dry and free of protuberances or stones that could damage the sheet.



ACOUSTIC
& INSULATION
TECHNIQUES

Molí d'en Bisbe s/n Pol. Ind. Foinvasa 08110 Montcada i Reixac (Barcelona)
Tel: 935 651 980 | Fax: 935 750 220 | division.construccion@acousticsit.com | www.acousticsit.com

Customer Service
Tel: (+34) 935 651 980



ISO 9001
ISO 14000