

# SOUNDMIX GA

Impact and airborne noise insulation in floors between residential housing and other entertainment uses. Particularly in first floors



## Description

SOUNDMIX GA is a complex made up of a sheet of synthetic EPDM rubber, of 3.5 kg/m<sup>2</sup>, which has a sheet of 4mm-thick high-density reticulated polyethylene adhered to one side of it. The complex also has a fleece on the rubber side.

## Application

Acoustic treatment of frameworks between floors that need great impact noise reduction and an increase in airborne noise insulation.

- Particularly indicated for the first frameworks between housing and other premises for commercial and entertainment use.
- The fleece protection favours the mortar adhering well and reduces the possibility of damaging it during its installation.

## Acoustic reduction

SOUNDMIX GA between the framework of a concrete flooring block (25 + 5 cm) and a 6 cm thick layer of cement on top finished off with ceramic tiles gives the following results in acoustic reduction:

R <sub>w</sub> (C, C <sub>tr</sub> ) = 60 (-2, -6) dB	ISO 717-1 to airborne noise
R (A) = 59 dB(A)	NBE CA-88 to airborne noise
Ln,w (C <sub>i</sub> ) = 54 (0) dB	ISO 717-2 to impact noise
Ln(A) = 60.3 dB(A)	NBE CA-88 to impact noise

*Test carried out as per the UNE-EN-ISO 140-6:1999 standard in LABEIN.*



## floors

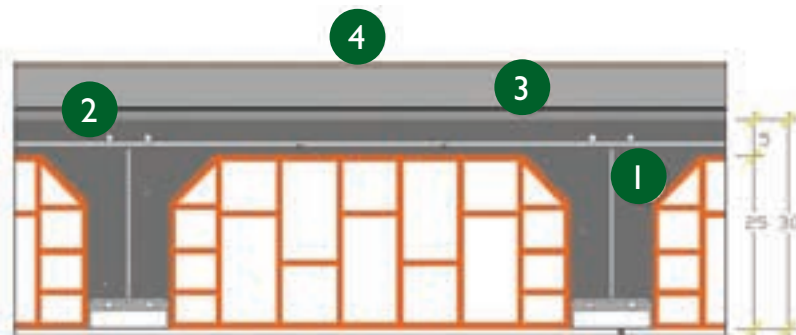


technical specifications available at our website in PDF format

## SYSTEM

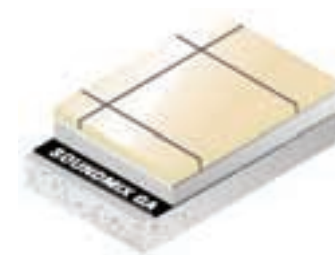
**The floating slab is made between the framework between floors and the layer of mortar which is the base for the floor tiles or stone.**

- 1 Framework between floors
- 2 Impact and airborne noise insulation: SOUNDMIX GA
- 3 5 cm layer of mortar
- 4 Flooring



## MEASUREMENTS AND PACKING

SOUNDMIX GA	weight	format	length	width	u/pallet	package	weight/pallet
	3.620 Kg/m <sup>2</sup>	roll	8 m	1 m	20	stretchable plastic	540 Kg



## Technical data

Weight: 3.620 Kg/m<sup>2</sup>  
 Thickness: 5.5 mm  
 Water steam transmission: 491.6 mg/m<sup>2</sup>h  
 Colour: Black and grey



ACOUSTIC & INSULATION TECHNIQUES

# SOUNDMIX GA

## floors



**Easy to install**



**Certified product**



### Important

The expansion joints envisaged in the building should not be short-circuited with SOUNDMIX GA, but require their own treatment, respecting the movement of the building for which they are envisaged.

Before laying SOUNDMIX GA, you should check that the floor is clean, dry and free of protuberances or stones that could damage the sheet.

## PROPERTIES

### Reduces impact noise

Soundmix GA is a sheet that is specially designed to add flexibility between the framework and the upper layer of mortar, forming a floating slab. It acts as insulation against impact noise due to the properties of the reticle of polyethylene.

### Reduces airborne noise

The sheet of EPDM together with the sheet of reticulated polyethylene improves the airborne acoustic insulation of the framework due to the change of impedances that are produced between the two materials.

### Steam barrier

SOUNDMIX GA is a compact material with a very low steam transmission level, which together with CINMIX for sealing the joints, creates a steam barrier between frameworks preventing the formation of damp and mold.

## EASY TO INSTALL

SOUNDMIX GA is supplied in rolls that are 1 metre wide and 8 metres long. It can be cut with a cutter and special tools are not required for handling it.

- 1 The floor must be stable and without any remains of material. Before installing, cut SOUNDMIX GA to the required size.
- 2 Lay the SOUNDMIX GA with the layer of PE against the framework overlapping the sheets by 10 cm at the edges. On reaching the wall, go up it by about 8 cm. Repeat this treatment with any drainpipes that may go through the framework.
- 3 Apply CINMIX self-adhesive to weld the joints between the sheets of SOUNDMIX GA and to stick them to the walls of the room.
- 4 Immediately after applying SOUNDMIX GA you may start to lay the layer of cement or the coverage. We recommend you to leave the layer of mortar to set to prevent problems with the finishes.



## Storage

Store the product in a well-ventilated area far from sources of heat. Protect the product from sunlight and atmospheric phenomena in general. Do not store out of doors. Store between 0 °C and 40 °C. Protect from dust and sand. It is not recommendable to store pallets on top of each other for long periods of time.



**ACOUSTIC  
& INSULATION  
TECHNIQUES**

Molí d'en Bisbe s/n Pol. Ind. Foinvasa 08110 Montcada i Reixac (Barcelona)  
Tel: 935 651 980 | Fax: 935 750 220 | [division.construccion@acousticsit.com](mailto:division.construccion@acousticsit.com) | [www.acousticsit.com](http://www.acousticsit.com)

**Customer Service**  
Tel: (+34) 935 651 980



ISO 9001  
ISO 14000