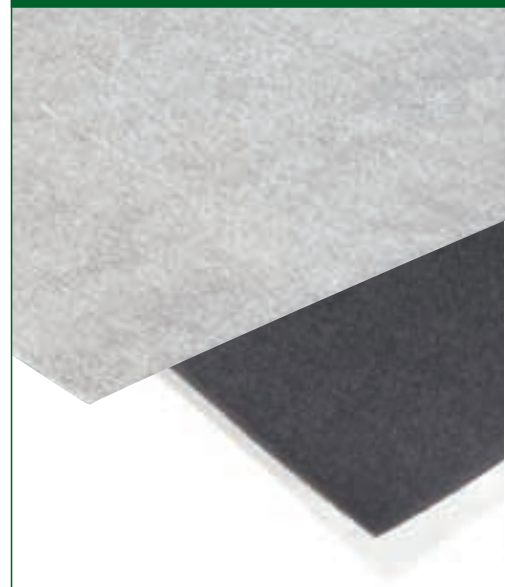


L A M I X 2 F



Eliminates the transmission of cracks from the sub floor to the ceramic or stone finished

floors



Description

LAMIX 2F is a complex formed by a sheet of synthetic EPDM rubber of 2.5 kg/m² that has a polyester fleece adhered to either side that gives it greater adherence to mortar glues.

Application

Product ready to be installed directly under ceramic floor tiles or stone.

Acoustic reduction

LAMIX 2F adhered with mortar glue between the floor and the ceramic tiles gives the following results in acoustic reduction:

- Sheet specially designed to absorb fissures caused by the structural movements of the framework.

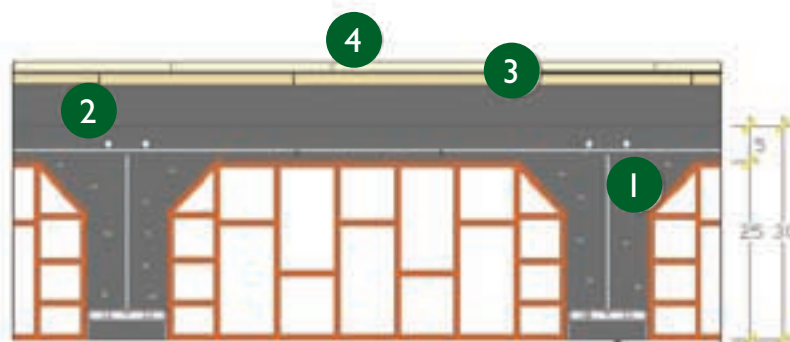
ΔL_w = 21 dB ISO 717-2 to impact noise
 $L'_{ne,w}$ = 83 dB(A) NF S31-074 to interior soundproofing

 technical specifications available at our website in PDF format

SYSTEM

Insulation and desolarization of the framework.

- 1 New framework or old flooring levelled
- 2 Layer of levelling mortar of approximately 5 cm or existing flooring
- 3 Insulation, sheet of EPDM + fleece on both sides: LAMIX 2F
- 4 Flooring, fixed with mortar glue



Technical data

Weight: 2.56 Kg/m²
 Water steam transmission: 491.6 mg/m²h
 Thickness: 1.2 mm
 Colour: Black and white

MEASUREMENTS AND PACKING

LAMIX 2F	weight	format	length	width	u/pallet	package	weight/pallet
	2.56 Kg/m ²	roll	8 m	1 m	50	stretchable plastic	445 Kg



LAMIX 2F

floors



Easy to install



Certified product



Important

The expansion joints envisaged in the building should not be short-circuited with LAMIX 2F, but require their own treatment, respecting the movement of the building for which they are envisaged.

Before laying LAMIX 2F, you should check that the floor is clean, dry and free of protuberances or stones that could damage the sheet.

PROPERTIES

Eliminates the transmission of fissures from the framework

LAMIX 2F insulates the floor, framework and other old finishes from the tile or stone flooring and thanks to its elastic properties absorbs the movements that occur in the substratum, preventing them from being transmitted to the decorative floor covering.

Reduces impact noise

The sheet of EPDM improves the acoustic insulation of the framework.

Improves room comfort

Due to the fact that LAMIX 2F acts as an absorber of sound vibrations, it manages to reduce by more than 50% the reflection of sound produced by footsteps in the same room.

Steam barrier

LAMIX 2F is a compact material with a very low steam transmission level, which together with CINMIX for sealing the joints, creates a steam barrier between frameworks preventing the formation of damp and mold.

EASY TO INSTALL

LAMIX 2F is supplied in rolls that are 1 metre wide and 8 metres long. It can be cut with a cutter and special tools are not required for handling it.

- 1 The floor must be stable and without any remains of material. Before installing, cut LAMIX 2F to the required size.
- 2 Spread the mortar glue with a 4/6 mm notched trowel on the floor: Consult the mortar manufacturer about the best mortar glue for adhering to LAMIX 2F and the finish you intend to use.
- 3 Spread the LAMIX 2F over the layer of mortar glue. Use a roller to ensure that it impregnates and adheres to the sheet.
- 4 Prevent air bubbles from forming between the floor and the LAMIX 2F.
- 5 Apply CINMIX self-adhesive to weld the joints between the sheets of LAMIX 2F and to stick them to the walls of the room.
- 6 Protect LAMIX 2F with wooden planking in areas where people will be walking.
- 7 Once the sheet is well adhered, lay the ceramic floor tiles with the same mortar glue and the same notched trowel.



Storage

Store the product in a well-ventilated area far from sources of heat. Protect the product from sunlight and atmospheric phenomena in general. Do not store out of doors. Store between 0 °C and 40 °C. Protect from dust and sand. It is not recommendable to store pallets on top of each other for long periods of time.



**ACOUSTIC
& INSULATION
TECHNIQUES**

Molí d'en Bisbe s/n Pol. Ind. Foinvasa 08110 Montcada i Reixac (Barcelona)
Tel: 935 651 980 | Fax: 935 750 220 | division.construccion@acousticsit.com | www.acousticsit.com

Customer Service
Tel: (+34) 935 651 980



ISO 9001
ISO 14000