

PR 3.5

Sound insulation for the backing of exterior and partition walls

Description

PR 3.5 is a complex made up of a sheet of synthetic EPDM rubber of 3.5 kg/m² that has POROMIX 20 mm thick felt adhered to one of its sides.

Application

It improves the acoustic insulation when it is placed in the chambers of double walls, whether brick or drywalls, and in reinforced chambers.

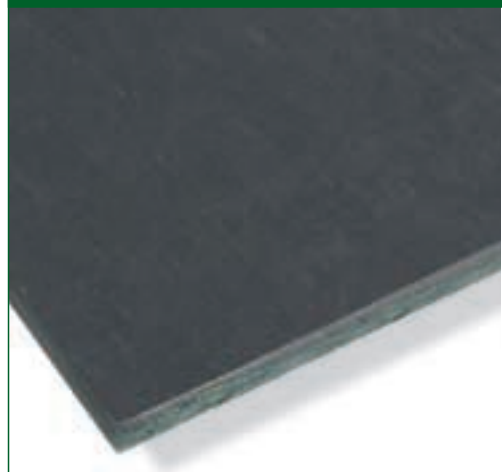
Acoustic reduction

PR 3.5 installed between the 14 cm brick wall and the metallic structure on which a 13 mm panel of laminated plaster is fixed gives the following results in acoustic reduction:

- Acoustic reduction of airborne noise plus thermal insulation with less thickness, which leaves room for installations.

R' (C, Ctr) = 52 (-2; -4) dB ISO 717-2
R' (A) = 50 dB(A) NBE CA-88

walls



 technical specifications available at our website in PDF format

SYSTEM

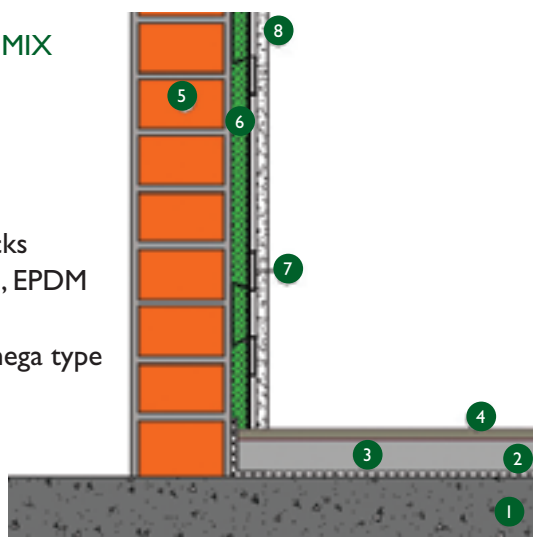
Mixed walls.

Floor

- 1 Framework between floors
- 2 Insulation: SOUNDMIX GM/ON, FOAMMIX
- 3 5 mm layer of mortar
- 4 Flooring

Vertical separation

- 5 7 cm thick double hollow bricks
- 6 Insulation, multi-layer material, EPDM sheet + felt: PR 3.5
- 7 30 mm thick metal profile, omega type
- 8 Panel of laminated plaster



Technical data

- Weight: 4.700 Kg/m²
- Fogging: > 90 % (DIN 75 201-A) (NF P 92-507)
- Thickness: 21 mm
- Colour: Black and green
- Flammability: Self-extinguishing (S.E.) (ISO 3795; MVSS302) up to UL94 V-2 / up to M-2 classification

MEASUREMENTS AND PACKING

PR 3.5	weight	format	length	width	u/pallet	package	weight/pallet
	4.700 Kg/m ²	roll	5 m	1 m	20	stretchable plastic	490 Kg



ACOUSTIC & INSULATION TECHNIQUES



PR 3.5

walls



Easy to install



Certified product



Important

The expansion joints envisaged in the building should not be short-circuited with PR 3.5, but require their own treatment, respecting the movement of the building for which they are envisaged.

PROPERTIES

Reduces airborne noise

PR 3.5 acts as acoustic insulation thanks to the viscoelastic properties of EPDM and the acoustic absorption of felt, managing to reduce transmissions of airborne noise through the walls. The behaviour of the system is based on the combination of a heavy resounding membrane and a great deal of elasticity that provides high muffling powers, adhered to a layer of sound-proofing, meaning that there is a strong change of impedances in the system and therefore a reduction in the noise transmitted by the system in the entire audible bandwidth, in low frequencies due to the resounding effect of the EPDM and in medium and high frequencies due to the effect of the absorption of the felt.

Improves room comfort

Thanks to the heat transmission coefficient ($K=0.62 \text{ Kcal/m}^2\text{h}^\circ\text{C}$) of POROMIX, you get improved thermal comfort in the home by reducing heat loss.

EASY TO INSTALL

PR 3.5 is supplied in rolls that are 1 metre wide and 5 metres long. It can be cut with a cutter and special tools are not required for installing it.

In reinforced walls exterior walls with brick wall

- 1 Build one of the walls.
- 2 Install PR 3.5 in the air chamber with the felt facing the wall. Attach with plastic pins, using 2 every square metre of surface area (2 at the top, 1 in the middle and 2 at the bottom). PR 3.5 should be applied homogeneously along the entire wall. The EPDM sheet should face the inside of the room.
- 3 Raise the other brick wall.
- 4 Plaster the two external sides of the wall.

In direct reinforced systems with panels of laminated plaster.

- 1 Build one of the walls.
- 2 Before installing it, cut PR 3.5 to the required size.
- 3 Install PR 3.5 in the air chamber starting at the bottom and working up, attach it with washers and self-threading screws, the same as for attaching the panel of laminated plaster. The sheet of EPDM should face the reinforcing.
- 4 Screw the panel of laminated plaster to the omega profile.

Storage

Store the product in a well-ventilated area far from sources of heat. Protect the product from sunlight and atmospheric phenomena in general. Do not store out of doors. Store between 0°C and 40°C . Protect from dust and sand. It is not recommendable to store pallets on top of each other for long periods of time.



**ACOUSTIC
& INSULATION
TECHNIQUES**

Molí d'en Bisbe s/n Pol. Ind. Foinvasa 08110 Montcada i Reixac (Barcelona)
Tel: 935 651 980 | Fax: 935 750 220 | division.construccion@acousticsit.com | www.acousticsit.com

Customer Service
Tel: (+34) 935 651 980



ISO 9001
ISO 14000